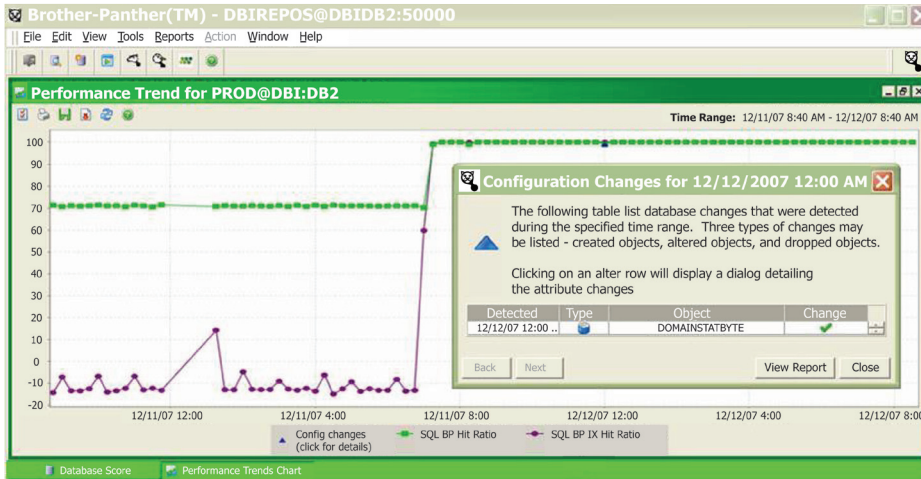




# Brother-Panther™ Hunts Performance Problems with Agility



Use Brother-Panther for DB2 LUW to track performance trends

## Every DBA's Worst Nightmare

Last Friday your databases were running like a well oiled machine – transactions were zipping along, you were outperforming your Service Level Agreements, customers were happy, and it seemed like your IT department could do no wrong. Now it's Monday morning – databases are down, the ones that aren't should be on life support, customers are angry, phones are ringing, your top performance DBA is home with the flu, and no one knows what happened. What changed?

## Database Performance Challenges

Utilities are now running automatically. Autonomic tuning is making automated changes to memory configurations. Dynamic SQL still has a mind of its own and is influenced by automatic statistics and dynamic memory configurations, and XQueries add yet another dimension to dynamic optimization. If you thought Dynamic SQL provided performance predictability challenges, multiply Automatic Utilities by Autonomic

Tuning by Dynamic Optimization and prepare for a potentially new level of performance volatility and resource shortages. With so many wheels in motion, physical design problems and the consequences of dynamic changes become increasingly difficult to understand and rapidly address.

## The Brother-Panther Performance Solution

Brother-Panther provides a major breakthrough in performance analysis and change management. Brother-Panther KNOWS what changed, when, and how changes influenced performance. Comprehensive history combined with rich analytics enable the analysis of performance trends over time correlated to change events (utility executions, physical design changes, and memory configuration changes). Armed with the knowledge of which change caused performance to head south, you will be able to easily rectify performance problems and inefficiencies. You will also find it remarkably easy to verify the effectiveness of tuning changes!

## Key Brother-Panther Features

- A Database Score, like a Credit Score, is provided so that you can quickly understand a database's health and efficiency. You no longer need to digest dozens of metrics and indicators

- Multiple databases are presented in a sorted summary grid making it a cinch to know at a glance which databases require attention and which are fine
- Optimized for multiple partitions – whether logical or data partitioning facility (DPF), easily compare performance of partitions to detect load imbalance and skew
- Logical Workflows guide you through database objects with increasingly filtered granularity of performance information, or jump to aggregated depth levels of your choice:
  - Database » Partitions » Bufferpools » Tablespace » Tables » Cost Aggregated Statements
  - Database » Tables with high I/O » Statements causing high I/O to a table
  - Database » Most Costly Statements
- Rapidly find and solve performance problems and inefficiencies with integrated "Find & Fix" workflows and interfaces to Explain and Advisors
- Autonomic monitoring automatically adjusts data collection to ensure minimal monitoring overhead

## Be a Performance Hero!

Download white papers and Brother-Panther trial software here:

[www.DBISoftware.com/brother-panther.php](http://www.DBISoftware.com/brother-panther.php)



Your Performance IS Our Business

Phone: (512) 249-2324

Toll-free: (866) 773-8789

[www.DBISoftware.com](http://www.DBISoftware.com)



DBI's authorized reseller in Germany, Austria, Switzerland

[www.seg.de](http://www.seg.de) • 49211961490

## Supported Databases

DB2 v8.1 F9a+, 8.2, 9.1, 9.5 (WSE and ESE)

## Supported Operating Systems

Linux, AIX, Sun Solaris, and Windows