

## Space AssuranceExpert<sup>+</sup>

Eliminates system outages and allows for continuous business expansion - thanks to the time-saving real-time monitor that automatically identifies problems

Monitors 24/7

Thus avoiding physical and logical problems for OLTP & Batch

Analyses and reports space

- ad hoc
- extract
- orphans and widows

Supports space and capacity planning

Monitors:

### Physically

1. (alerts on) critical limits like LDS, last PBG partition, NPSIs
2. Alters PBR RPN, or max Partitions in realtime
3. performs real-time monitoring of all extents and allocation activity

### Logically

1. Sequences and Identities
2. Numeric Primary keys
3. DBAT usage

Zowe open Source GUI

- virtual desktop
- zero client installation
- browser based graphical interface (3270-Green Screen also available)

Comes with EasyInstall

No SMP/E required

## Space AssuranceExpert<sup>+</sup> for Db2 z/OS

Real Time Expansion Audit and Management



Business Expansion goes hand in hand with more transactions, new Applications, Big Data etc. They say space infinite - up to a point. The same is true for Db2!

If you can imagine having infinite disk space and infinite memory, what limits could there possibly be?

If you think about it you will find limits in different categories:

1. Through hardware
2. Through logic
3. Through design

Db2 for z/OS itself doesn't come with high watermark warnings-but there is

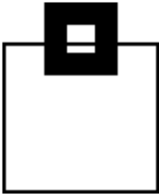
Space AssuranceExpert<sup>+</sup> (SAX<sup>+</sup>)

### How it works

SAX<sup>+</sup> exploits IFCID Technology (OPx) to perform real-time monitoring of all Db2 extent activity.

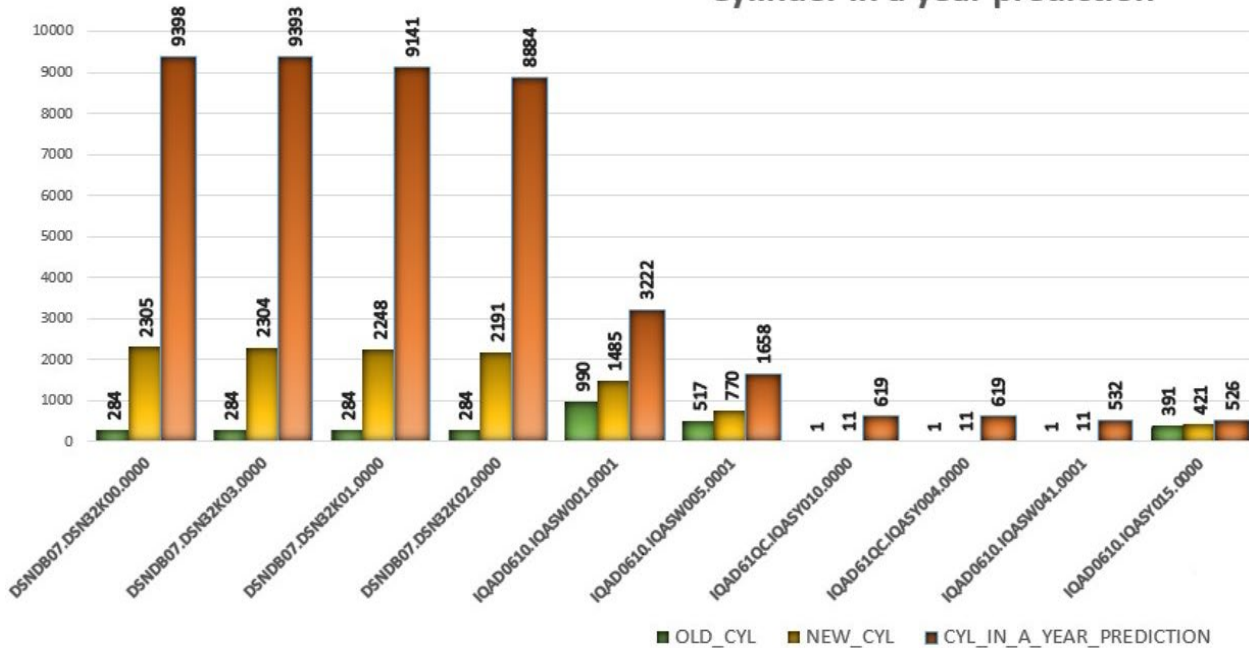
Not only does SAX<sup>+</sup> take care of Linear Dataset checks, but also of efficient DASD usage and defragmentation.

In addition to the IFCID Technology, SAX<sup>+</sup> also processes: Sequences, DOCIDs, Identity Columns, Numeric Primary key Checks, DDF DBAT (=+)



Checking and Altering of PBR/RPN DSSIZE, Checking and Altering of MAXPARTITIONS, and Usage Statistics.

### Cylinder in a year prediction



DBNAME	SPNAME	PARTITION	DB2	DSCOUNT	MAXDATE	MINDATE	DELTA_DAYS	NEW_CYL	OLD_CYL	DELTA_CYL	CHANGED_PERC	CHANGE_CYL_PER_DAY	CYL_IN_A_YEAR_PREDICTION	Spalte1
DSNDB07	DSN32K00	0000	QA1B	0001	25.11.2018	13.08.2018	104	2305	284	2021	711	19,43269231	9398	DSNDB07.DSN32K00.0000
DSNDB07	DSN32K03	0000	QA1B	0001	25.11.2018	13.08.2018	104	2304	284	2020	711	19,42307692	9393	DSNDB07.DSN32K03.0000
DSNDB07	DSN32K01	0000	QA1B	0001	25.11.2018	13.08.2018	104	2248	284	1964	691	18,88461538	9141	DSNDB07.DSN32K01.0000
DSNDB07	DSN32K02	0000	QA1B	0001	25.11.2018	13.08.2018	104	2191	284	1907	671	18,33653846	8884	DSNDB07.DSN32K02.0000
IQAD0610	IQASW001	0001	QA1B	0001	25.11.2018	13.08.2018	104	1485	990	495	50	4,759615385	3222	IQAD0610.IQASW001.0001
IQAD0610	IQASW005	0001	QA1B	0001	25.11.2018	13.08.2018	104	770	517	253	48	2,432692308	1658	IQAD0610.IQASW005.0001
IQAD0610	IQASY010	0000	QA1B	0001	19.08.2018	13.08.2018	6	11	1	10	1000	1,666666667	619	IQAD61QC.IQASY010.0000
IQAD61QC	IQASY004	0000	QA1B	0001	19.08.2018	13.08.2018	6	11	1	10	1000	1,666666667	619	IQAD61QC.IQASY004.0000
IQAD0610	IQASW041	0001	QA1B	0001	25.11.2018	18.11.2018	7	11	1	10	1000	1,428571429	532	IQAD0610.IQASW041.0001
IQAD0610	IQASY015	0000	QA1B	0001	25.11.2018	13.08.2018	104	421	391	30	7	0,288461538	526	IQAD0610.IQASY015.0000



**SAX+** comes with a full package of batch and online reporting capabilities for any space related item (individual objects, group of objects, storage groups, volumes, full subsystems, ... - you name it) for accounting and trending.

ODBC based Excel integration can be used for graphically oriented reporting.

Visit our SAX pages: <https://www.seg.de/sax> or <https://www.segus.com/sax>  
Ask for a free trial: [info@seg.de](mailto:info@seg.de)