



TM

# Brother-Eagle®

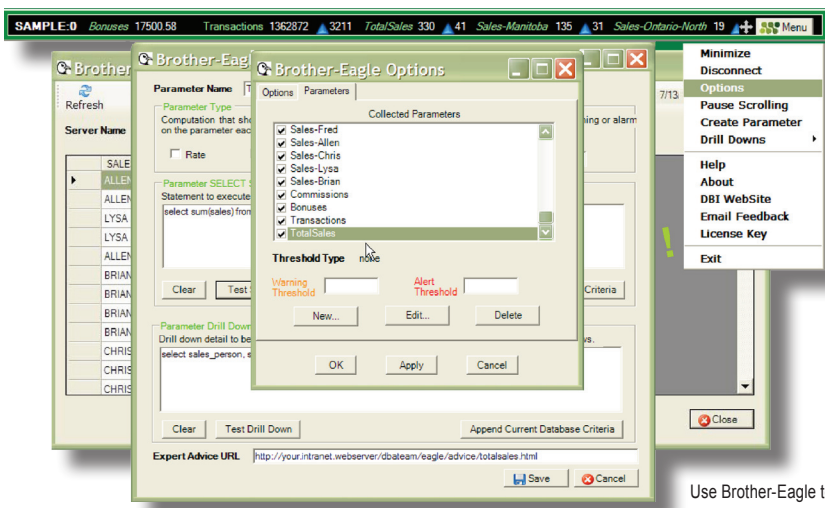
## A Bird's Eye View of Your Business



Brother-Eagle for DB2 "stock ticker"

X-Escalations 0   Sort Ovflo % 1   SQL/Sec 6.33 ↑ 1   Pkg Hit % 2   Deadlocks 0   Log Used % 1

Timeouts 0   Avg Result Size 0   IX Read Efficiency 0   Active Appls 1   Write time(ms) 1   Menu



Use Brother-Eagle to define custom metrics for the most productive bird's eye view of your business.

dex read efficiency, # Active users, # Blocks read, or written per sec., Locks, and # Long running SQL

### Brother-Eagle Editions

#### FREE Standard Edition Includes:

- Essential performance metrics
- Highly customizable UI with innovative scrolling "stock ticker" graphical presentation
- Web-enabled expert advice

#### Enterprise Edition (EE):

- FREE Standard Edition Features, plus
  - Add your own metrics
  - Customize expert advice to your environment
  - Remove unwanted metrics (if any)
- Interactive drill downs to view and optionally terminate current and executing transactions, lock contention, and run away queries

### Effectively Monitoring Database Performance

If your organization manages dozens or hundreds of databases, wouldn't you like to be able to quickly determine which databases require your team's attention?

Meet **Brother-Eagle**. She soars high above your organization searching for opportunities that warrant in-depth attention, and summarizes the performance characteristics of your distributed databases in a single, easy to read and interpret, interactive scrolling "stock ticker" graphical presentation.

If there is a poor performance or inefficiency problem, Brother-Eagle will find it and bring it to your attention.

### Highlights

- Client-based, robust UI, low impact, small footprint
- High level analysis of current database metrics
- Monitor multiple databases in separate "stock ticker" displays

### Key Brother-Eagle Features

- Identifies problems and inefficiencies
- Each performance metric has expert advice with performance tips
- The user interface (UI) can be customized to suit user preferences
- The Enterprise Edition can be further customized by the user to add or remove additional performance metrics
- With Enterprise Edition, additional integrated drill downs enable the analysis and termination of current and executing connections, lock contention, and run away queries
- Examples: Average lock time(ms), SQL per second, Transactions per second, Bufferpool hit ratio, Catalog cache hit ratio, Synchronous read percentage, In-

#### Supported Databases

DB2 v8.2, 9.1, 9.5 (WSE or ESE)

#### Supported Operating Systems

Linux, AIX, Sun Solaris, and Windows

**Be a Performance Hero!**  
 Register for your **FREE** Standard Edition at [www.Brother-Eagle.com](http://www.Brother-Eagle.com) and immediately see performance improvements for your business



Phone: (512) 249-2324  
Toll-free: (866) 773-8789  
[www.DBISoftware.com](http://www.DBISoftware.com)



DBI's authorized reseller in Germany, Austria, Switzerland  
[www.seg.de](http://www.seg.de) • 49211961490

DBI, Database-Brothers, Brother-Wolf, Brother-Owl, Brother-Eagle, Brother-Panther, Brother-Thoroughbred, Brother-Watchdog, the DBI, Brother-Wolf, Brother-Owl Brother-Eagle, Brother-Panther, Brother-Thoroughbred, and Brother-Watchdog logos, and all other DBI products or service marks are registered trademarks or trademarks of Database-Brothers, Inc. All other trademarks or registered trademarks belong to the respective companies. ©2008 Database-Brothers, Inc. All rights reserved.