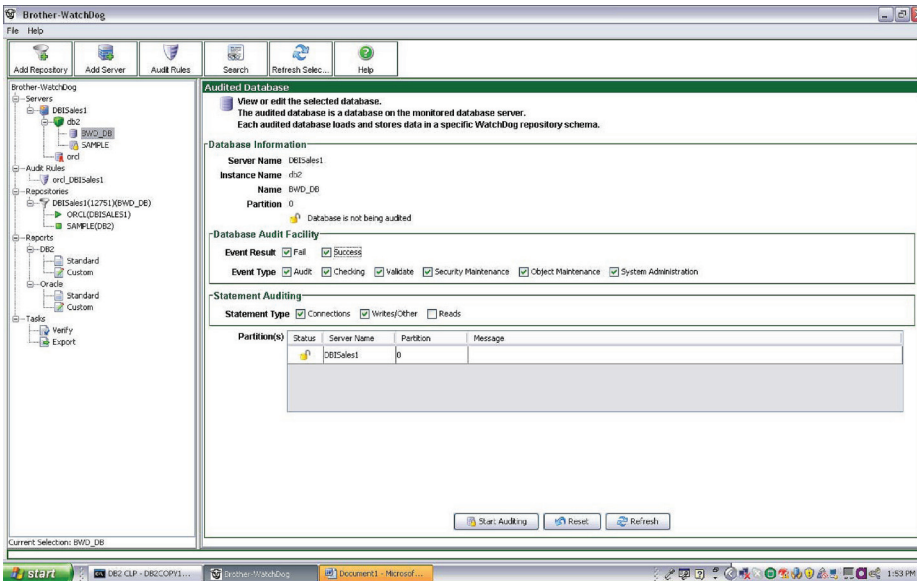




TM

# Brother-WatchDog®

## Data Security, Auditing, and Compliance



Audit databases with Brother-WatchDog for DB2

### Audit Critical Corporate Data

- Audit trails must be immutable, simple, flexible, timely, and with the lowest possible overhead
- Receive timely alerts for suspicious, inappropriate, or anomalous data events
- Protect valuable data assets from malfeasance
- Drive accountability for compliance, data integrity, and data security throughout the organization

### WHO? WHAT? WHEN? WHERE? Brother-WatchDog Knows

**Anonymous Insiders** – today's web applications enable thousands of end-users to efficiently connect to application servers. To improve application performance, application servers establish a number of persistent pooled connections to corporate databases under the authority of a single generic user – such as WEBADM. In the eyes of the database, all data

access and updates are conducted by this userid and the real end-user identity is lost within the Connection Pool. With no correlation between actual privileged end-users and their database activities, anonymous insider malfeasance can occur without evidence or accountability.

### Digital Surveillance

Brother-WatchDog tracks access and updates to corporate data according to your unique requirements. Like a surveillance camera, Brother-WatchDog captures and records all data activities to create immutable audit trails and hold privileged users accountable. Web application end-user identities and locations are captured and correlated to their database statement activities, giving you the power to hold ALL privileged users accountable and to answer the tough questions:

- Who initiated data access or updates – web-users, client-users, analysts, SYSADMs, or database administrators
- What data was accessed or updated
- Where did the activity originate (IP address)
- When did the database activity occur (date, time)
- Did access or updates succeed or fail?

### Regulation Compliance

**Sarbanes-Oxley:** Improve internal preventative and detective controls, assuring financial data integrity

**HIPAA:** Safeguard patient health information and provide audit trails for access

**PCI:** Audit all access to cardholder data with detailed reporting

**CA SB 1386/1950:** Requires prompt disclosure to customers of any unauthorized internal or external data access that could compromise the security, confidentiality, or integrity of personal information

**Gramm-Leach-Bliley Act:** Requires financial companies to protect an individual's non-public consumer and customer information from unauthorized access and disclosure via Safeguards Rule

**Penalties for compliance regulation failures include substantial fines and potential incarceration**

### Key Features

- Ability to audit specific tables with optional selective criteria
- Tracks connections (Logins and Logouts) to address access controls
- Easily audit specific users, power users, DBAs, DDL activity (Create, Alter, Drop...), and security changes (Grants, Revokes)

### Secure Your Critical Data Assets!

For additional information and Brother-WatchDog trial software visit:  
[www.dbisoftware.com/brother-watchdog.php](http://www.dbisoftware.com/brother-watchdog.php)



Phone: (512) 249-2324  
Toll-free: (866) 773-8789  
[www.DBISoftware.com](http://www.DBISoftware.com)



### Supported Databases

DB2 v8.2, 9.1, 9.5

### Supported Operating Systems

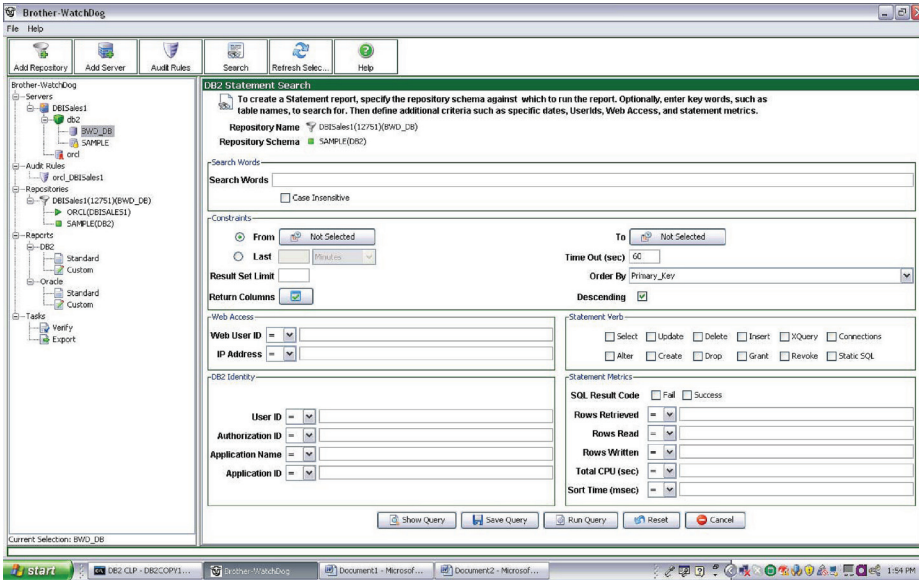
Linux, AIX, Sun Solaris, and Windows



TM

# Brother-WatchDog®

## Data Security, Auditing, and Compliance



### Business Process Outsourcing

To reduce costs and obtain necessary skillsets, companies are outsourcing more and more business functions. Robust data auditing and protection is increasingly critical to maintain control over your sensitive business data assets and to give you definitive insight into precisely who is accessing or updating data.

- unmask the otherwise anonymous insider identities of privileged data users
- Repository servers built on IBM DB2 LUW for reliability, performance, scalability, and ease and familiarity of administration
- Optionally interfaces with, and exploits, the light weight, low overhead scopes of the db2audit facility to provide an integrated auditing solution

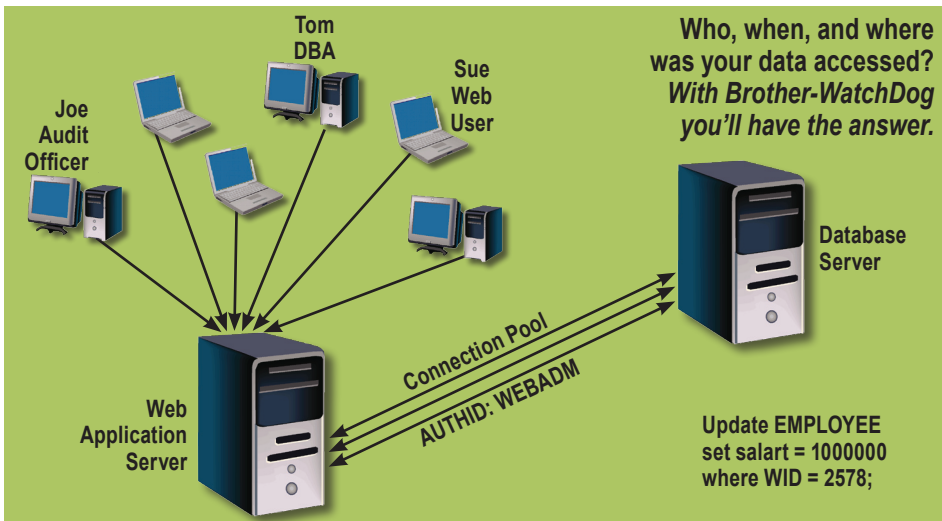
Create statement reports with Brother-WatchDog for DB2

### Key Features

- Reveal detailed database activity records for Web end-users, database clients and data analysts, and local administrative users
- Create and schedule periodic reports, notifications, alerts; conduct simple Google®-like ad hoc discovery searches
- Tamper Evident Seals (digital signatures) harden audit activity data to ensure its accuracy
- Receive e-mail notifications based on user-defined audit rules
- Automatically minimize audit overhead by utilizing the least obtrusive audit capture methods according to your audit requirements – unreliable network sniffing is not used
- Built-in compression minimizes audit storage requirements
- Uses unobtrusive US Patent Pending technology to

### Protect Your Critical Data

Privileged users account for 70-80% of data breaches including theft of individual identities, customer lists, protected health information, trade secrets, and intellectual property. Visit [www.brother-watchdog.php](http://www.brother-watchdog.php) for trial software and to learn how Brother-WatchDog protects your valuable corporate assets.



Phone: (512) 249-2324  
Toll-free: (866) 773-8789  
[www.DBISoftware.com](http://www.DBISoftware.com)

**SOFTWARE ENGINEERING**  
DBI's authorized reseller in Germany, Austria, Switzerland  
[www.seg.de](http://www.seg.de) • 49211961490